

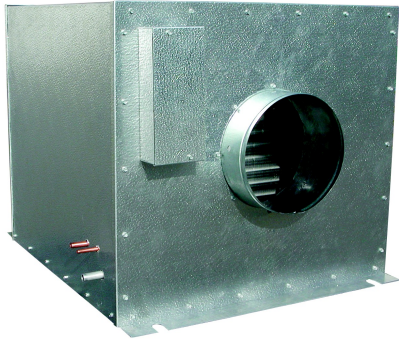


## HS 18000 DUCTED SYSTEM CONSISTS OF:

System parameters for 18000 btu when:  
@ 38°F suction & 90°F ambient temperature with a 10°  
temperature differential of air flow over fan coil



<b>Condensing Unit:</b>	
<b>Part No.:</b>	CU180
<b>Horsepower:</b>	3
<b>Refrigerant:</b>	R134a
<b>Voltage:</b>	208-230/1/60
<b>MCA (Amps):</b>	25.3
<b>Length (In.):</b>	25
<b>Width (In.):</b>	34.1
<b>Height (In.):</b>	19
<b>Connection Suction (In.):</b>	7/8 S
<b>Connection Liquid (In.):</b>	3/8 S
<b>Compressor:</b>	ZS19KAE-PFV-118
<b>Oil:</b>	Polyol Ester
<b>Oil Recharge Amount (oz.):</b>	25
<b>Shipping Weight (Lbs.):</b>	140
<b>Max Fuse:</b>	40



**Evaporator:**

<b>Part No.:</b>	HS120
<b>Voltage:</b>	115v
<b>MCA (Amps):</b>	4.30a
<b>Length (In.):</b>	27.13"
<b>Width (In.):</b>	27.88"
<b>Height (In.):</b>	26.38"
<b>Shipping Weight (Lbs.):</b>	87 lbs.
<b>Connection Suction (In.):</b>	0.88"
<b>Connection Liquid (In.):</b>	0.38"
<b>Drain Line (In.):</b>	0.88"
<b>CFM:</b>	1400

**System Line Set:**

<b>Suction (In.):</b>	1/2"
<b>Liquid (In.):</b>	3/8"