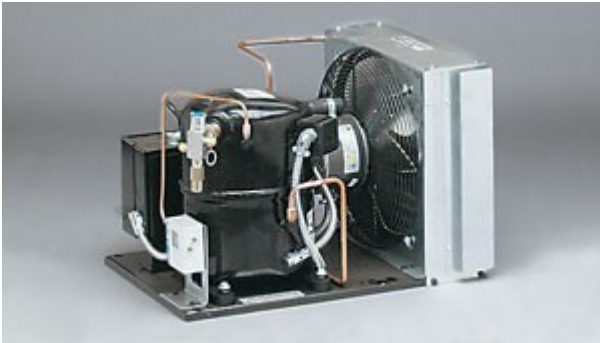


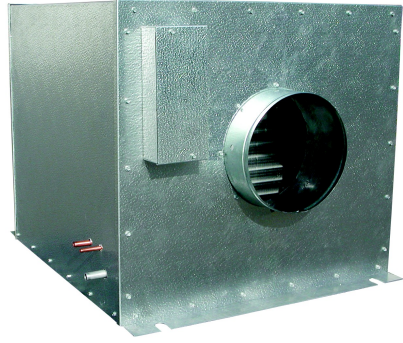


**HS 10000 DUCTED SYSTEM
CONSISTS OF:**

System parameters for 10000 btu when:
@ 38°F suction & 90°F ambient temperature with a 10° temperature differential of air flow over fan coil



Condensing Unit:	
Part No.:	CU100
Horsepower:	1
Refrigerant:	R134a
Voltage:	208-230/1/60
MCA (Amps):	14.8
Length (In.):	24.0
Width (In.):	16.9
Height (In.):	15.9
Connection Suction (In.):	5/8 F
Connection Liquid (In.):	3/8 F
Connection Type:	Flare
Compressor:	CS10K6EPFV
Oil:	Polyol Ester
Receiver Cap. 90 % Full (Lbs.):	8.4
Shipping Weight (Lbs.):	130
Features:	BX, Low Pressure, CC Heater
LTL Only:	Yes
Pumpdown (Lbs.):	8.4



Evaporator:

Part No.:	HS 87
Voltage:	115v
MCA (Amps):	2.1a
Length (In.):	27.13"
Width (In.):	22.88"
Height (In.):	22.38"
Shipping Weight (Lbs.):	66 lbs.
Connection Suction (In.):	0.63"
Connection Liquid (In.):	0.38"
Drain Line (In.):	0.88"
CFM:	810
Duct:	10"

System Line Set:

Between Coils:

Suction (In.):	3/8"
Liquid (In.):	1/2"