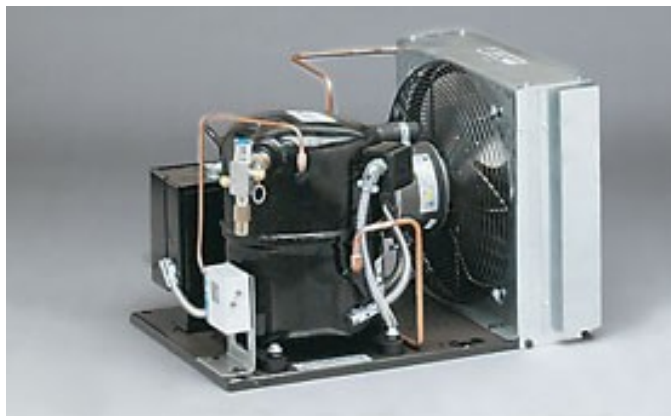




**HS 8600 SYSTEM
CONSISTS OF:**

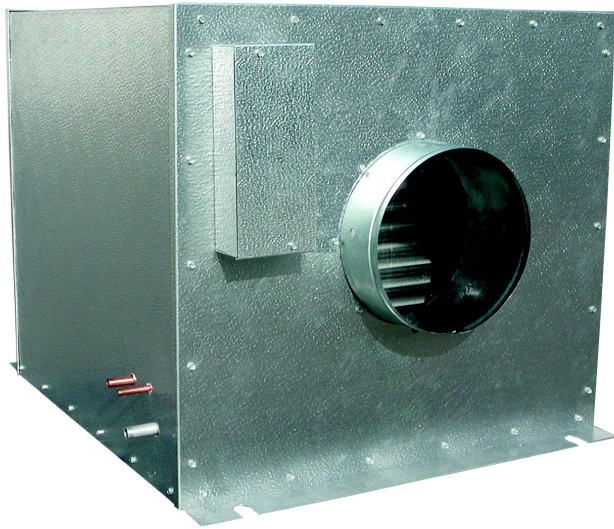
System parameters for 8600 btu when:

@ 38°F suction & 90°F ambient temperature with a 10° temperature differential of air flow over fan coil



Condensing Unit:

	CU86
Horsepower:	3/4
Refrigerant:	R134a
Voltage:	115/1/60
MCA (Amps):	20.7
Length (In.):	17.5
Width (In.):	14.3
Height (In.):	12.0
Connection Suction (In.):	5/8 F
Connection Liquid (In.):	1/4 F
Receiver Capacity (90%) lbs.:	5.1
Compressor:	RR81C2EIAA959
Shipping Weight (Lbs.):	79
Features:	BX, Low Pressure



Evaporator:

Part No.:	HS 66
Voltage:	115v
MCA (Amps):	2.1a
Length (In.):	27.13"
Width (In.):	22.88"
Height (In.):	22.38"
Shipping Weight (Lbs.):	58 lbs.
Connection Suction (In.):	0.63"
Connection Liquid (In.):	0.38"
Drain Line (In.):	0.88"
CFM:	750

System Line Set:

Suction:	5/8"
Liquid:	3/8"