



**HS 15000 DUCTED AIR COOLED SYSTEM
CONSISTS OF:**

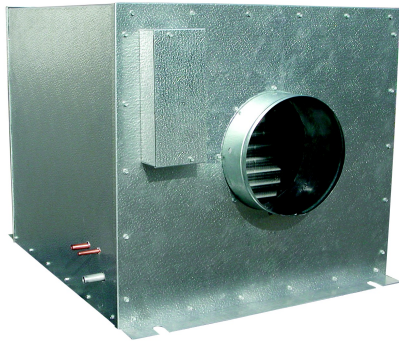
System parameters for 15000 btu when:

@ 38°F suction & 90°F ambient temperature with a 10° temperature differential of air flow over fan coil



Condensing Unit:

Horsepower:	CU150
Refrigerant:	1 1/4
Voltage:	R134a
MCA (Amps):	208-230/1/60
Length (In.):	21
Width (In.):	24.1
Height (In.):	18.3
Connection Suction (In.):	16.6
Connection Liquid (In.):	7/8 S
Compressor:	3/8 S
Oil:	ZS15KAE-PFV-118
Oil Recharge Amount (oz):	Polyol Ester
Shipping Weight (Lbs.):	25
Max Fuse:	125
	35



Evaporator:

Part No.:	HS120
Voltage:	115v
MCA (Amps):	4.30a
Length (In.):	27.13"
Width (In.):	27.88"
Height (In.):	26.38"
Shipping Weight (Lbs.):	87 lbs.
Connection Suction (In.):	0.88"
Connection Liquid (In.):	0.38"
Drain Line (In.):	0.88"
CFM:	1400

System Line Set:

Suction (In.):	1/2"
Liquid (In.):	3/8"