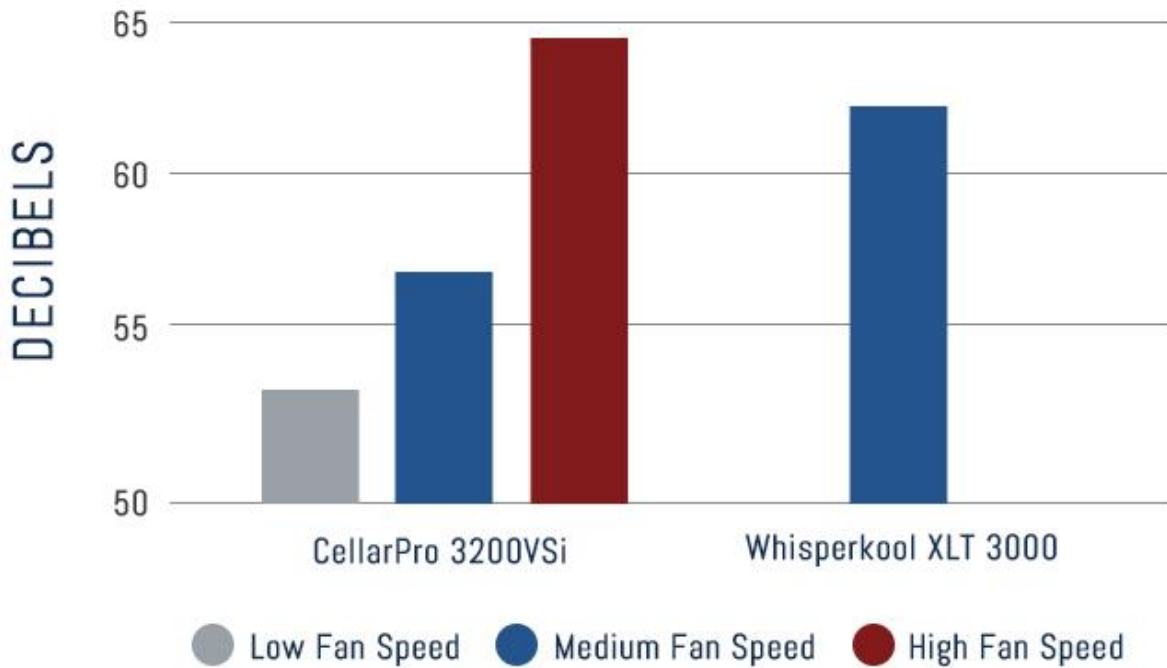


3200 VS SOUND PERFORMANCE



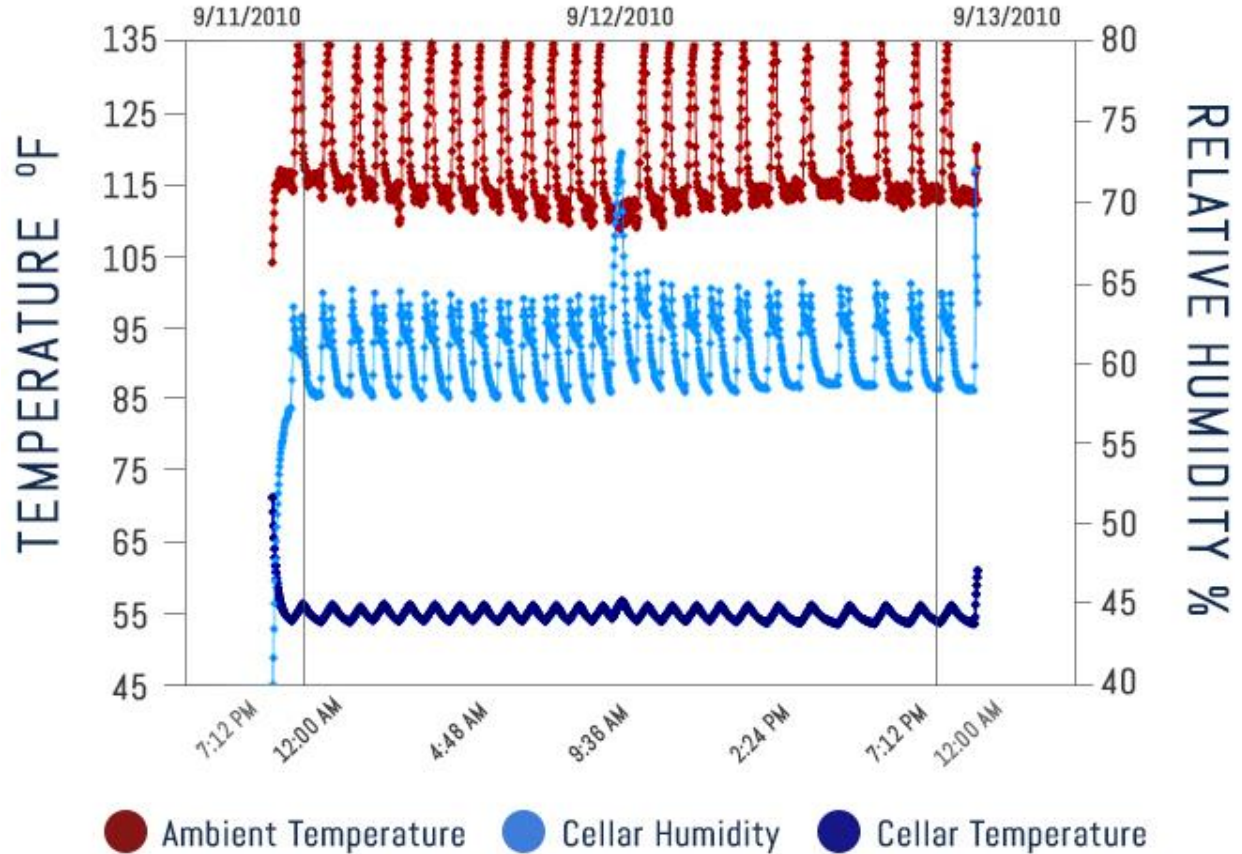
Summary:

CellarPro's 3200VSi cooling units with variable-speed fans are significantly quieter than WhisperKool's XLT 3000 at the low and medium fan speeds. At the high fan speed, CellarPro is slightly louder, yet it is more powerful at both the medium and high fan speeds. The decibel readings for the CellarPro and, WhisperKool XLT 3000 wine cooling units were measured in identical conditions while the fans and compressor were cycled "on".

Test Conditions:

- Both wine cooling units were installed and tested in the same test wine cellar.
- The decibel measurements were recorded three feet from the wine cooling unit and six feet above the floor.
- CellarPro's 3200VSi offers three variable-speed settings - Low, Medium and High - to meet variable cooling needs and ambient conditions. Decibel measurements were recorded at all three fan settings and displayed in the above chart.
- WhisperKool's XLT 3000 does not offer variable-speed fan control.

3200 VS COOLING & HUMIDITY PERFORMANCE



Summary:

We tested CellarPro's 3200VSi wine cooling unit for 24 hours by heating the condenser environment to 115°F. Despite the grueling heat, CellarPro's 3200VSi was able to maintain temperatures at 55°F and relative humidity at 62% inside the wine cellar. (2)

Test Conditions:

- The cooling unit was tested in a 750 cubic foot wine cellar with R-13 rigid foam insulation and a moisture barrier
- The wine cellar was filled with approximately 7500 bottles
- The CellarPro cooling unit was set to maintain 55°F (53°F "off" and 4°F Temperature Differential) (1)
- The temperature measurements inside the wine cellar were taken at the far wall (approximately 10' from the cooling unit)

1) CellarPro cooling units provide maximum flexibility for controlling the environment inside a wine cellar. Rather than selecting a single temperature target, CellarPro users designate the lower and upper temperature settings during which the cooling unit cycles off and on. In the test charted above, the CellarPro cooling unit was set to cycle "off" at 53°F, and cycle "on" at 57°F (55°F average.)

(2)The short spikes reflect the cooling unit's auto-defrost cycle.